

COVID-19 Action Plan

Please Note

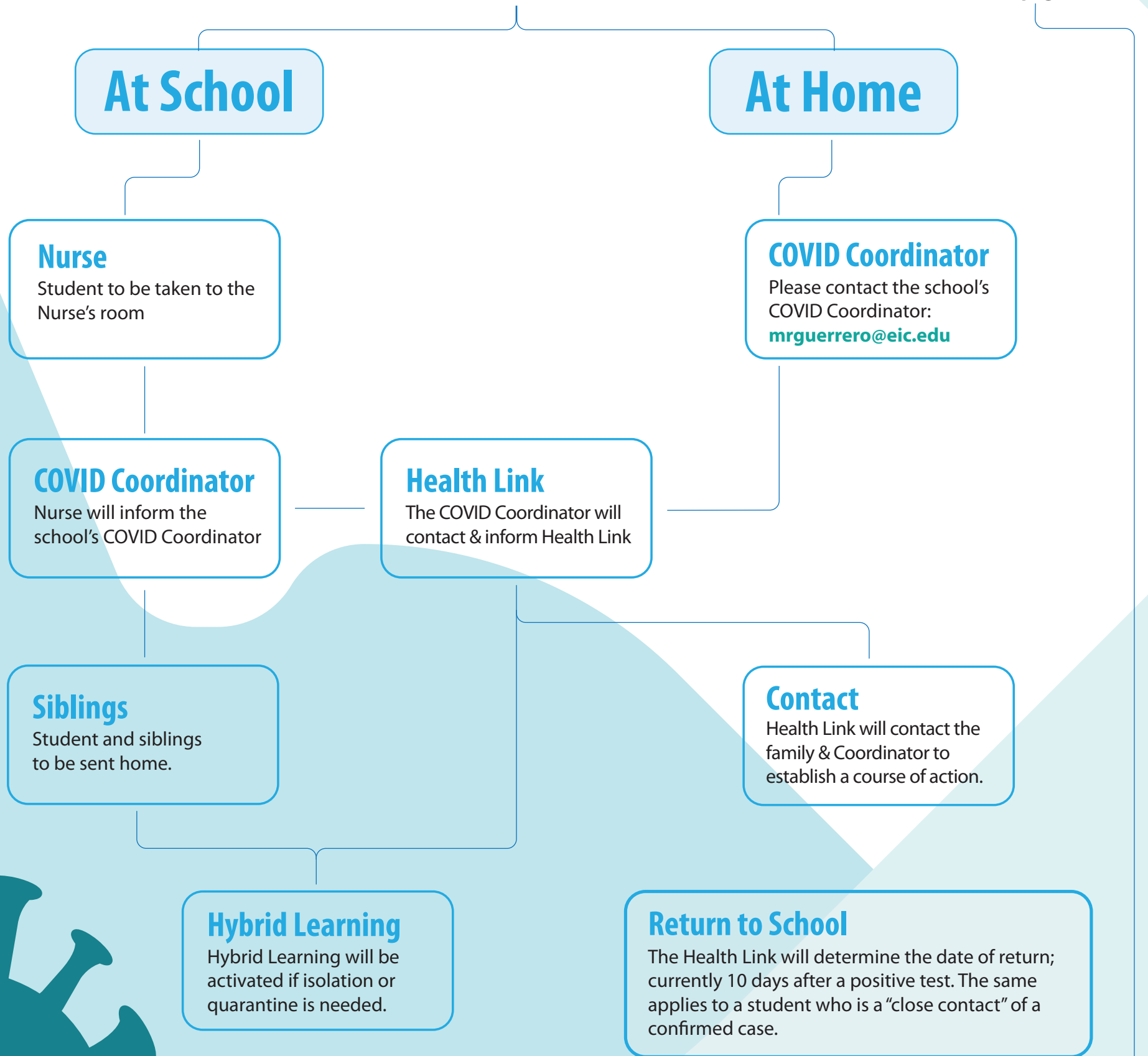
Students should not attend school if they have the following Covid-19 related symptoms:

- * Slight fever (>37.2)
- * Generally feeling unwell
- * Sore throat
- * Chest pain
- * Slight cough
- * Any breathing difficulties
- * Headache
- * Vomitting
- * Nasal discomfort
- * Stomach pain
- * Diarrhoea

Suspected Case

Confirmed Case

See page 2



COVID-19 Action Plan

Confirmed Case

COVID Coordinator

Family must contact the school's COVID Coordinator: mrguerrero@eic.edu

What Happens to the Class of a Confirmed Case

The class will not be quarantined.

Health Link

The COVID Coordinator will contact & inform Health Link

COVID Coordinator

The COVID Coordinator will send a close contact report and liaise with Health Link. Health Link will determine which students to be tested/quarantined.

Course of Action

Both will work together to determine close contact and establish a course of action (test/quarantine as dictated by Health Link) which will be communicated to the family.

Close Contact

Definition: Students who were within a 1,5m radius of a confirmed case for over 15 minutes without a mask.

Hybrid Learning

Hybrid Learning will be activated if isolation or quarantine is needed.

Return to School

The Health Link will determine the date of return; currently 10 days after a positive test. The same applies to a student who is a "close contact" of a confirmed case.

